

# See in 15

## Maggie Arlidge and Ann Jasper

### A project to improve flow through Maternity Triage



**Maternity Triage** - Maternity Triage is an unscheduled admission area, for women 16 week pregnant to 6 weeks postnatal. Women are seen with a wide range of pregnancy and postnatal concerns. The most recent CQC report concluded that wait times for initial assessment in Maternity Triage were too long, increasing the risk of serious incidents occurring

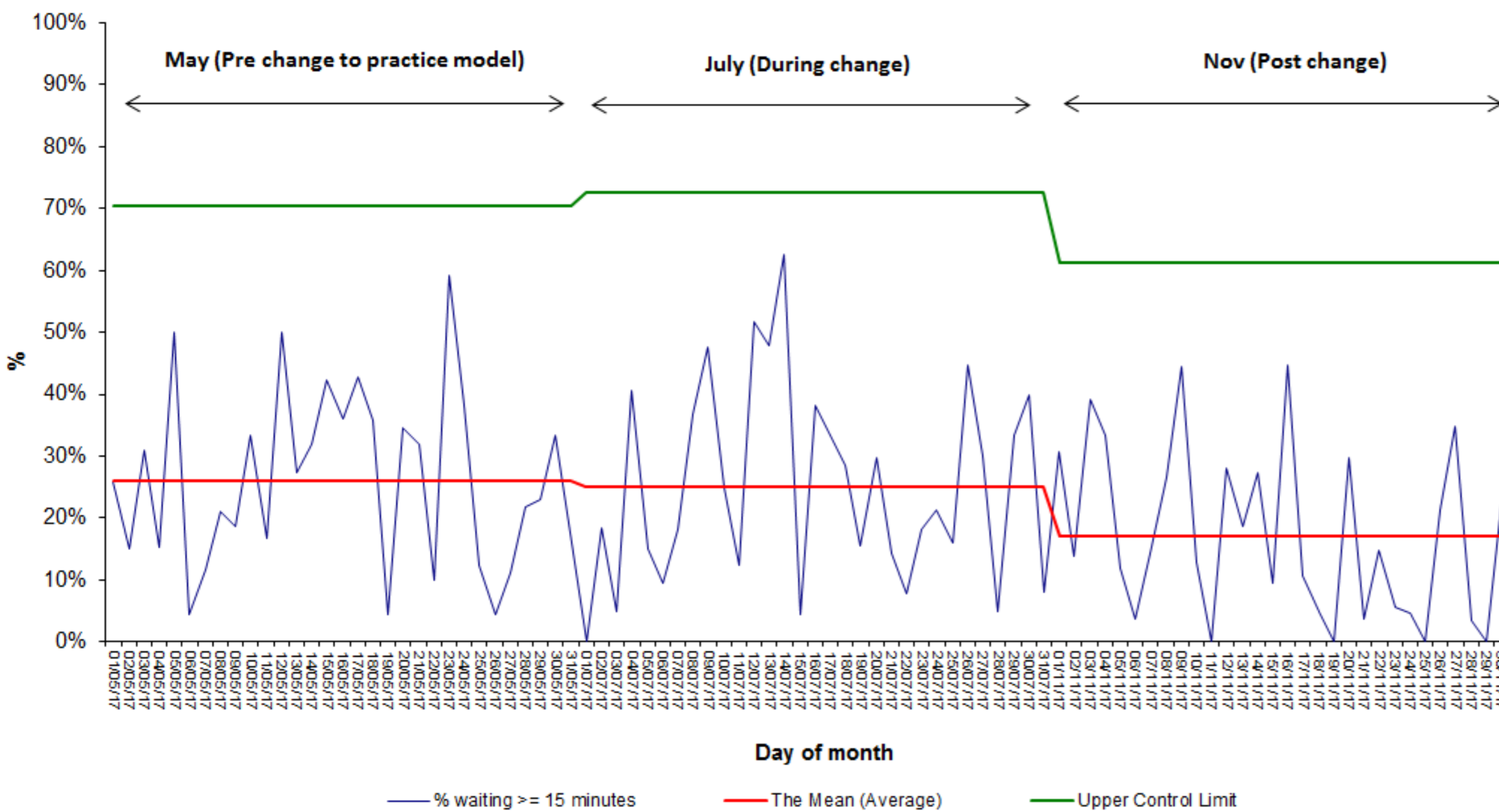
Previous data shows that 80-85% of women are seen within 30 minutes, 6% of women wait over an hour to be seen

### Aim

- To see 95% of women within 15 minutes of arrival, by December 2017 (meet the target set by CQC)
- Develop an Acuity Score and Assessment proforma for use in Maternity Triage

### Results

Proportion of women waiting 15mins+ by day of month (May, Jul & Nov 2017)

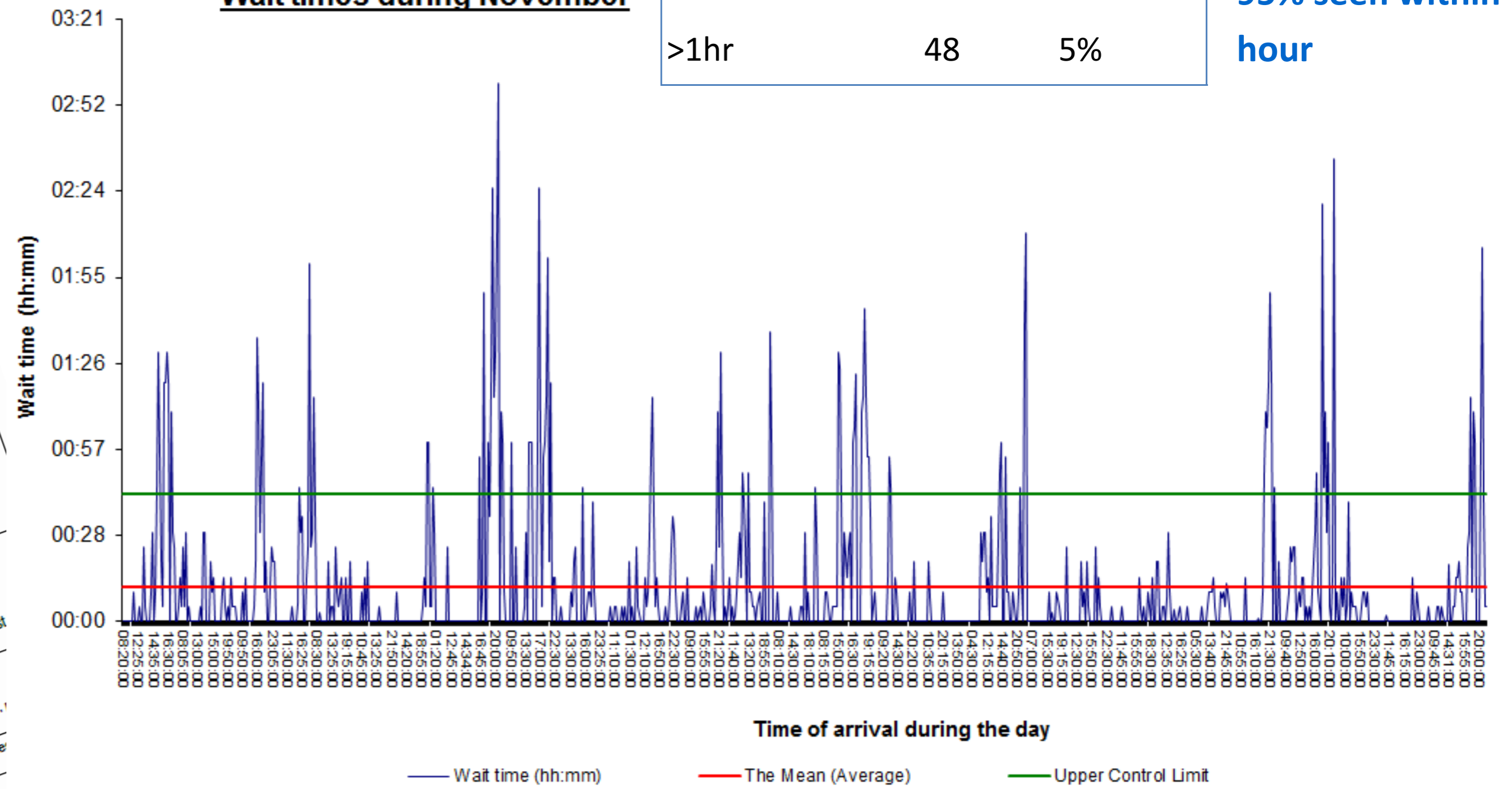


Wait times during November 2017

Wait times	No.	%
0 - 15 mins	742	81%
16 - 30 mins	73	8%
31 - 1hour	53	6%
>1hr	48	5%

89% of women seen within 30 minutes  
95% seen within 1 hour

Wait times during November



### Findings and going forward

Further work to imbed practice model. Increased attendance due to the ACT campaign, (increasing awareness in fetal movement patterns). Increased activity due to change in referral pathway. Training for rotational staff prior to commencing placement. In addition to welcome pack. Increase Midwife PGD's. Review of the MCA role and consider increasing to 24 hours