

Proposals for
the future
development of
our hospital sites

In any year over half a million people visit our hospitals to receive advice, treatment or care.

The nature of healthcare is developing and changing all the time and it is important that we ensure that our hospitals are able to provide a safe and pleasant environment both now and in the future. Our trust has a history of successful new developments at both our sites which have delivered improved facilities and services for patients. It is responsible for us to be looking to the future and planning developments for the future of both hospitals; our proposals for Cheltenham General are summarised on the right.

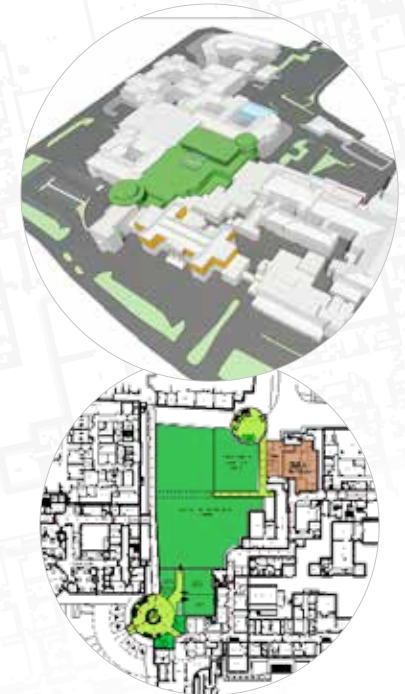
Proposed future plans for Cheltenham General Hospital

Our proposals for Cheltenham General (CGH) include:

- ▶ A new 3 storey building to replace the existing Centre Block and West Block. The ground floor would be fitted out to accommodate Outpatients and the upper floors would provide assessment and ward areas.
- ▶ Refurbishing the space on the old Hazleton ward in Centre Block
- ▶ Providing additional theatres

These schemes would enable us to:

- ▶ Provide a high quality environment for our outpatient services
- ▶ Provide dedicated facilities for Day Surgery and pre-assessment, with close proximity to Theatres
- ▶ Improve the connection between St Luke's Wing and the rest of the hospital
- ▶ Improve the connection between theatres and intensive care
- ▶ High quality ward environments for inpatients
- ▶ Improve patient and visitor facilities including retail and refreshment outlets
- ▶ Create a dedicated elective surgery centre within St Paul's Wing with dedicated theatre provision



Scheme	Est. Cost
New Centre Block	£37,162,000
Conversion of Hazleton	£ 2,154,000
Two new theatres	£ 5,086,000
Elective orthopaedic centre	£ 7,052,000
Estimated Total CGH Development Cost	£51,454,000