

Proposals for  
the future  
development of  
our hospital sites

**In any year over half a million people visit our hospitals to receive advice, treatment or care.**

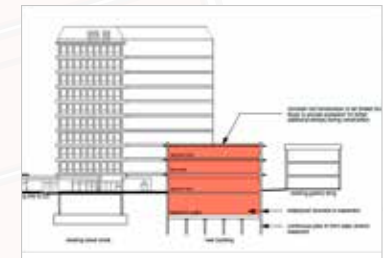
The nature of healthcare is developing and changing all the time and it is important that we ensure that our hospitals are able to provide a safe and pleasant environment both now and in the future. Our trust has a history of successful new developments at both our sites which have delivered improved facilities and services for patients. It is responsible for us to be looking to the future and planning developments for the future of both hospitals; our proposals for Gloucestershire Royal are summarised on the right.

## Proposed future plans for Gloucestershire Royal Hospital



**Our proposal for Gloucestershire Royal (GRH) is for a new three storey building, situated between the Tower Block and Gallery Wing:**

- ▶ The ground floor would be fitted out to accommodate Outpatients and additional imaging
- ▶ The upper floors could each accommodate a 30-bedded ward
- ▶ The location provides an opportunity to better connect Gallery Wing to the other clinical buildings.



**This scheme would enable us to:**

- ▶ Relocate orthopaedic outpatients to provide additional space adjacent to our Emergency Department to support the rapid assessment of people presenting with an emergency.
- ▶ High quality ward environments for inpatients
- ▶ Provide additional imaging capacity
- ▶ Improve main entrance to our hospital with closer links to the public parking areas.

Scheme	Est. Cost
Estimated Total GRH Development Cost	£18,100,000