



**Gloucestershire Hospitals**  
NHS Foundation Trust

## **Amenity rooms at the Women's Centre**



Help provide extra care & equipment on the ward  
of your choice by sending a donation payable to  
'Chelt & Glos Hospitals Charity' to the Charity  
Office, Cheltenham General Hospital, GL53 7AN  
Tel: 0300 422 3231  
[www.gloshospitals.nhs.uk/charity](http://www.gloshospitals.nhs.uk/charity)

GHPI0338\_01\_18  
Department: Maternity  
Review due: January 2021  
[www.gloshospitals.nhs.uk](http://www.gloshospitals.nhs.uk)

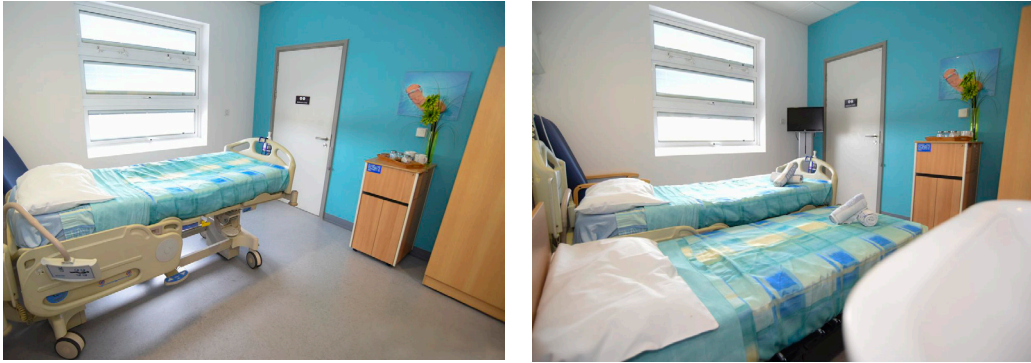


**BEST CARE FOR EVERYONE**

## Introduction

Amenity rooms are available at an extra cost for women who would like the privacy of a single room on the Maternity Ward. This leaflet gives you information about the amenity rooms and how to make a request.

## Amenity rooms



On the Maternity Ward we have several newly decorated amenity rooms which have an en-suite bath or shower, tea and coffee tray, toiletries, television and a folding bed for partners to stay overnight.



## Request for an amenity room

Please complete and return to:

Mrs Lisa Meadows  
Private & Overseas Office  
Ward 9a  
Gloucestershire Royal Hospital  
Great Western Road  
Gloucester GL1 3NN  
Tel: 0300 422 6880

Name: \_\_\_\_\_

Address: \_\_\_\_\_

\_\_\_\_\_

\_\_\_\_\_

\_\_\_\_\_

Contact telephone number: \_\_\_\_\_

MRN (this will be on your appointment letter):

\_\_\_\_\_

Name of consultant/midwife:

\_\_\_\_\_

## How much do amenity rooms cost to use?

A charge of £200.00 per overnight stay (or £100 if only used during the day) is made for this facility. You will be required to sign an 'Agreement to Pay' form before you are discharged from hospital. An invoice will be sent to your home address and is payable within 28 days.

By using an amenity room you are agreeing to pay for a single en-suite room. Your maternity/midwifery care remains the same as the care provided to all women and babies on the ward. You are not charged for maternity care or dietary choices. Food is provided for the patient only.

If you are interested in occupying an amenity room during your stay, please complete the tear-off slip at the end of this leaflet.

## Is this facility always available?

Demand for these rooms is quite high and priority is given according to clinical need. We regret it is not possible to book a room in advance but we will try our best to accommodate your wishes.

If you experience complications during pregnancy or birth, you will be cared for where you can be observed more closely.

## General information

Please be aware that while you are staying on the Maternity Ward or in an amenity room you are responsible for the safety of your personal belongings and valuables. Should anything go missing we cannot be held responsible. If you feel unable to take care of your property while you are staying with us please let your midwife know as she can arrange for your belongings to go to the General Office within the hospital for safe keeping until you are discharged.

Sometimes single rooms are required for women or babies with serious medical conditions, or when a mum and baby are separated soon after birth. If this happens the midwife-in-charge may ask you to move from your amenity room to a bay area.

## Visiting times

### Partners and baby's siblings

9:00am to 9:00pm

### Other visitors

2:00pm to 3:00pm and 6:00pm to 7:00pm (under review)

The numbers of visitors is restricted to 2 per mother and baby.

## Contact information

You can get more information about this service by contacting the:

**Private & Overseas Patients Manager**

**Ward 9a**

**Gloucestershire Royal Hospital**

**Tel: 0300 422 6880**

**Monday to Friday, 9:00am to 4:00pm**

Content reviewed: January 2018